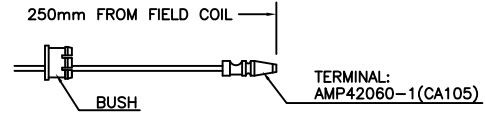
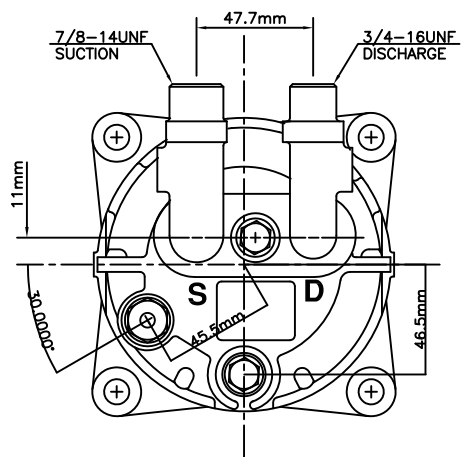


A B C D G H I J

1 NOTE: THIS PRODUCT TO BE FREE FROM ALL MATERIAL AND PRODUCTS CONTAINING LEAD AND HEXAVALENT CHROME IN ACCORDANCE WITH EU REGULATIONS.



TERMINAL LEAD DETAIL

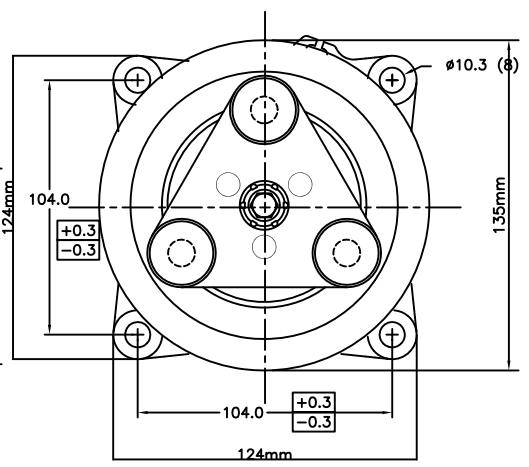
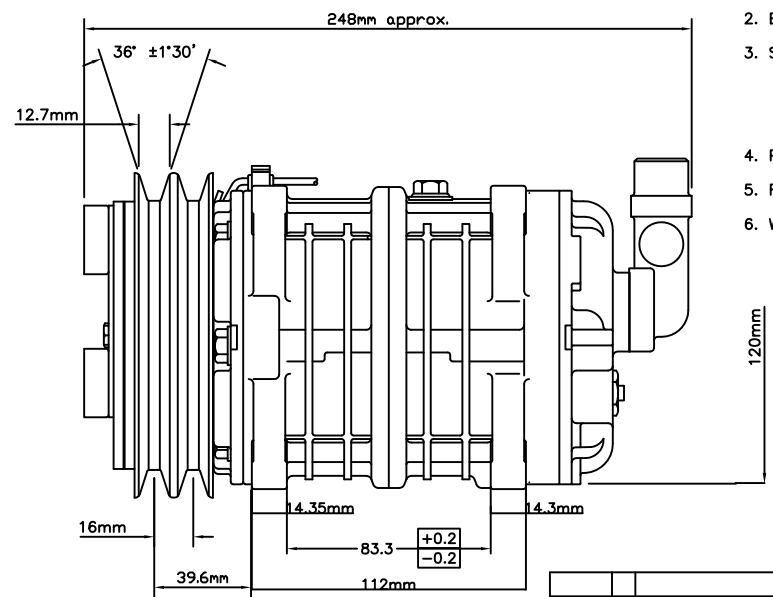
COMPRESSOR SPECS

- MODEL : TM-16HS
- NUMBER OF CYLINDERS - BORE OF CYLINDER X STROKE : 6 - $\phi 36 \times 26.7$
- DISPLACEMENT : 162.9cm³/rev
- PERMISSIBLE SPEED : 700~6000r/min
- DIRECTION OF ROTATION : CLOCKWISE OR COUNTERCLOCKWISE (NOTE LEAF SPRING CLUTCH CW ONLY)
- LEAKAGE TEST

		HIGH SIDE	LOW SIDE
LEAKAGE TEST	MPa (gage)	2.9	1.5
	{kgf/cm ² G}	{30}	{15}
PRESSURE TEST	MPa (gage)	4.4	2.2
	{kgf/cm ² G}	{45}	{22.5}
- REFRIGERANT : HFC-134a
- LUBRICANT : ZXL 100PG 180[°]cm³
- MASS : 4.7kg

CLUTCH SPEC:

- VOLTAGE: DC 12V
- BELT: 2A TYPE
- STATIC TORQUE
 - INITIAL: 35 N m (3.5 kgfm)
 - AFTER BURNISHING: 49 N m (5 kgfm)
- POWER CONSUMPTION: MAX. 45W (at 25°C)
- ROTATION: CLOCKWISE & COUNTERCLOCKWISE
- WEIGHT: 2.25 kg



REV	SYH	DESCRIPTION	DATE

FORMER PART NO.	INTCHG	ITEM	QTY	PART NO.	PART NO.	CUSTOMER NO.	REMARKS
DO NOT SCALE DWG							
COMPRESSION ASSY							CUSTOMER SIZE(SHT)
103-56011							
VALEO COMPRESSOR							

SCALE	NONE	SURFACE FINISH	-
MAT'L	-	WEIGHT	-
APPROVED BY	MAT'L ENGINEER	CHECKED BY	DRAWN BY
DATE	DATE	DATE	DATE

PART NO.	LEVEL	DESCRIPTION	QTY